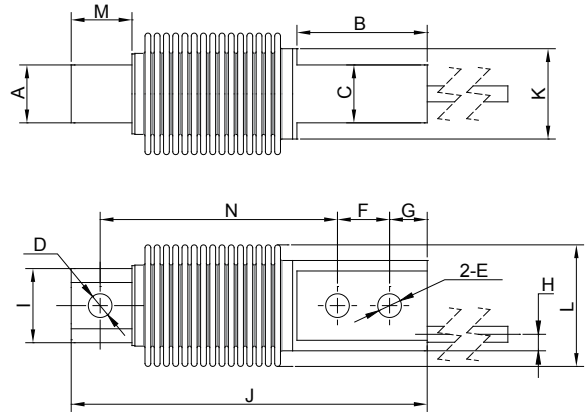


# SBMTB

## Single-Ended Beam Load Cells



## Specifications

**Rated Output(mV/V):**

2.0±0.002

**Nonlinearity:**

±0.017%FS

**Creep(30min.):**

±0.017%FS

**Insulation Resistance:**

≥5000M ohms

**Temperature:**

Compensated Range

-10°C~+40°C

**Temp. Effect on Zero:**

≤0.002%FS/°C

**Zero Balance:**

±1%FS

**Hysteresis:**

±0.017%FS

**Input Resistance:**

387±4 ohms

**Excitation Voltage:**

5~15V DC(20V MAX)

**Temperature:**

Operating Range

-40°C~+65°C

**Temp. Effect on Output:**

≤0.002%FS/°C

**Safe Overload:**

150%

**Repeatability:**

±0.01%FS

**Output Resistance:**

350±1 ohms

**Material:**

Stainless steel

**Cable Length:**

3m

**IP Class:**

IP68

**Cable Color Code:**

Green..... + EXC

Black..... - EXC

White..... + SIG

Red..... - SIG

Yellow..... + SEN

Blue..... - SEN

## Dimensions

RATED CAPACITY	A	B	C	D	E	F	G	H	I	J	K	L	M	N
kg/mm														
5~300	20	45	20	Ø8.2	Ø8.2	18	13	6.6	Ø26	123	Ø34	Ø42	22.5	82
500	20	45	20	Ø11.1	Ø10.5	18	13	6.6	Ø26	123	Ø34	Ø42	22.5	82

## Order Information

LOAD RATING	
SBMTB-5kg	SBMTB-10kg
SBMTB-20kg	SBMTB-30kg
SBMTB-50kg	SBMTB-75kg
SBMTB-100kg	SBMTB-200kg
SBMTB-300kg	SBMTB-500kg

## Interchangeable Products

MANUFACTURER	MODEL
METTLER TOLEDO	MTB
HBM	Z6
TRANSCCELL	BSH
VISHAY Celtron	HBB
Tedea-Huntleigh	355