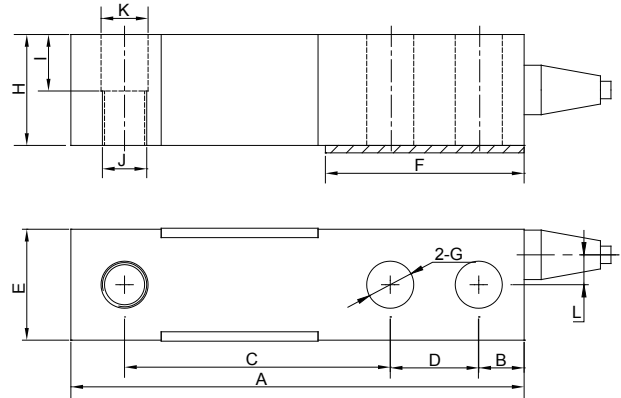


SBS

Single-Ended Beam Load Cells



Specifications

Rated Output(mV/V):
3.0±0.003

Nonlinearity:
±0.03%FS

Creep(30min.):
±0.03%FS

Insulation Resistance:
≥5000M ohms

Temperature:
Compensated Range
-10°C~+40°C

Temp. Effect on Zero:
≤0.002%FS/°C

Zero Balance:
±1%FS

Hysteresis:
±0.03%FS

Input Resistance:
387±20 ohms

Excitation Voltage:
5~10V DC(15V MAX)

Temperature:
Operating Range
-10°C~+70°C

Temp. Effect on Output:
≤0.002%FS/°C

Safe Overload:
150%

Repeatability:
±0.03%FS

Output Resistance:
350±5 ohms

Material:
Alloy Steel

Cable Length:
6m

IP Class:
IP67

Cable Color Code:
Red..... +EXC
Black..... - EXC
Green..... +SIG
White..... - SIG

Dimensions

RATED CAPACITY	A	B	C	D	E	F
kg/mm						
113.5(250lb)	130	15.7	76.2	25.4	31.8	57
250~2500	130	15.7	76.2	25.4	31.8	57
2500~7500	171.4	19	95.2	38.1	37.4	76
7500~10000	222.2	25.4	120.6	50.8	50	102

RATED CAPACITY	G	H	I	J	K	L
kg/mm						
113.5(250lb)	Ø13.5	31.8	16.2	1/2"-20 UNF	Ø13.5	10.1
250~2500	Ø13.5	31.8	16.2	M12x1.75	Ø13.5	10.1
2500~7500	Ø19.8	37.4	17.8	M18x1.5	Ø19.8	13
7500~10000	Ø26.2	50.5	25	M24x2	Ø26.2	17

Order Information

LOAD RATING	
SBS-250lb	SBS-250kg
SBS-500kg	SBS-1t
SBS-1.5t	SBS-2t
SBS-2.5ts	SBS-2.5t
SBS-5t	SBS-7.5ts
SBS-7.5t	SBS-10t

Interchangeable Products

MANUFACTURER	MODEL
TRANSCCELL	SBS