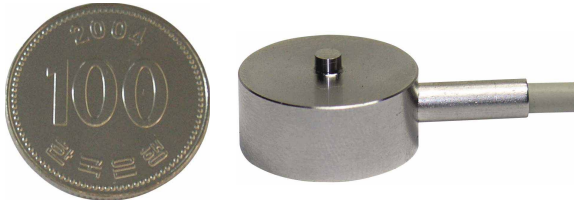


Model CBFS Series

Compression

Miniature Load Cell(3~1000kg)



The model CBFS miniature type is designed for low profile compression service.

Its capacities range from 3kg to 1000kg and it comes complete with 1.5m of load cell cable.

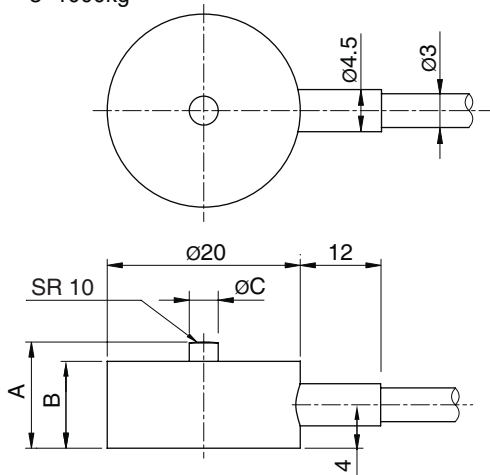
- low profile
- Rated output(1mV/V)
- Protection class IP65

SPECIFICATIONS

MODEL	CBFS	
Rated capacity (R.C.)	3, 5kg	10, 30, 50, 100, 200, 300, 500, 1000kg
Rated output(R.O.)	Appr. 1.0mV/V	1.0mV/V ± 1%
Material	Aluminum	Stainless steel
Non-linearity	≤ 1% R.O.	
Hysteresis	≤ 1% R.O.	
Non-repeatability	≤ 1% R.O.	
Creep error	≤ 0.5% in 20min.	
Zero balance	≤ 1% R.O.	
Compensated temperature range	-10 ~ 70°C	
Operating temperature range	-20 ~ 80°C	
Temp. effect on rated output	≤ 0.1% LOAD/10°C	
Temp. effect on zero balance	≤ 0.1% R.O./10°C	
Terminal input resistance	350 Ohms ± 10 Ohms	
Terminal output resistance	350 Ohms ± 5 Ohms	
Insulation resistance (Min.)	2000 MOhms at 50V DC	
Excitation voltage	5V(Recommended), 10V(Max.)	
Electrical connection	ø3mmx1.5m(28AWG x 4Core Shielded)	
Protection class	meets IP 65	
Safe overload	150% R.C	
Ultimate overload	300% R.C	

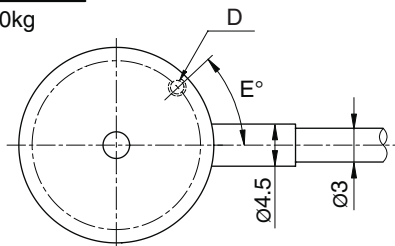
TYPE - A

3~1000kg



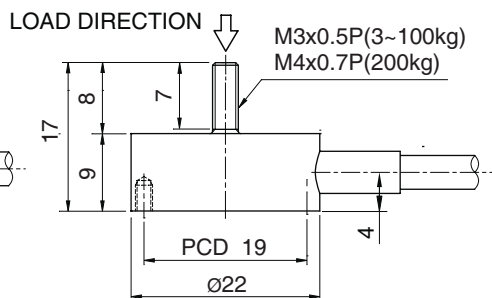
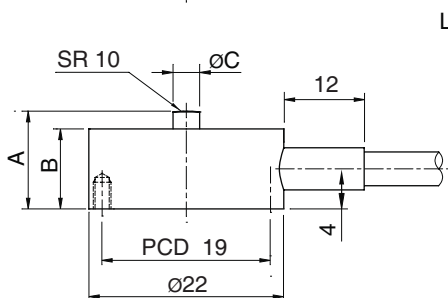
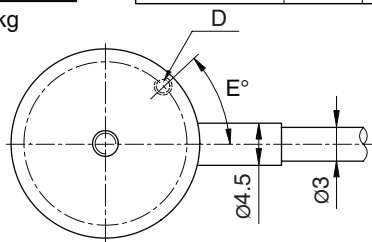
TYPE - B

3~500kg



TYPE - C

3~200kg

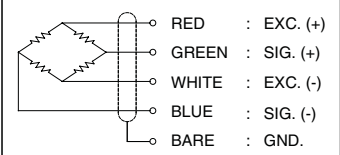


ORDERING INFORMATION

CBFS - 10

MODEL	CAPACITY
CBFS A	3kg~1000kg
CBFS B	3kg~500kg
CBFS C	3kg~200kg

WIRING INFORMATION



* Specifications are subject to change without notice

SEP, 2011