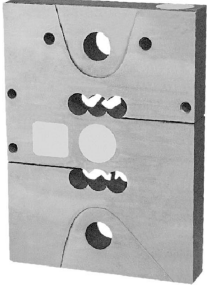
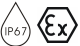


RoHS

Ex NEPSI



- Alloy steel IP67 S-type load cell
- High accuracy
- Specially designed crane scales

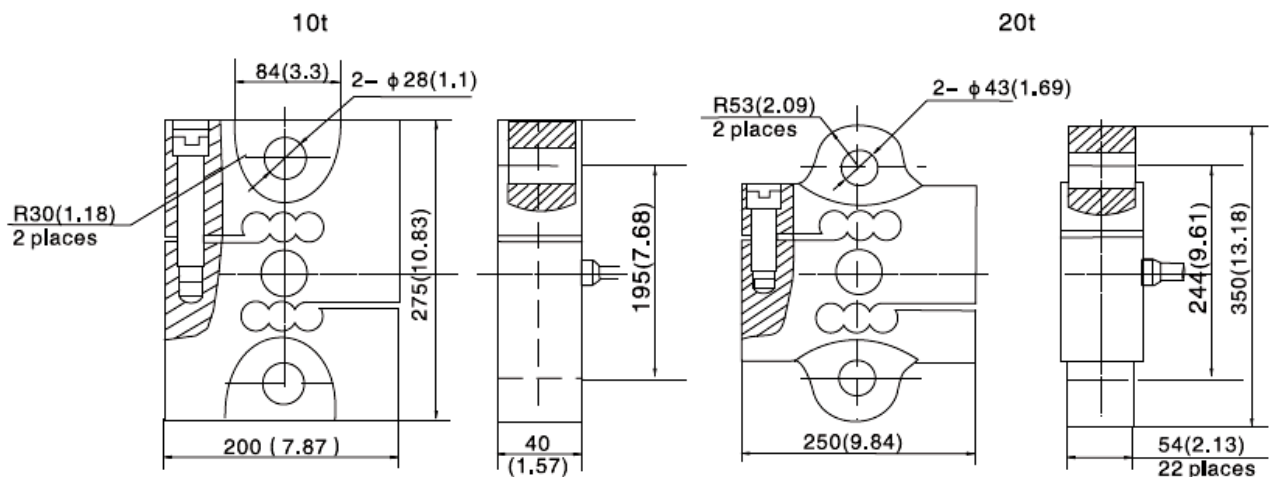


Capacity	Accuracy	Part-Number
10 t	C3	H3C-C3-10t-1B
20 t	C3	H3C-C3-20t-1B

Specification:

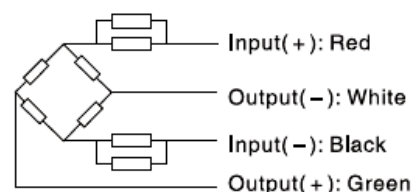
Accuracy class		C3		
Output sensitivity (= FS)	mV/V	2.0 ± 0.01		
Maximum capacity (E _{max})	t	10, 20		
Maximum number of load cell intervals (n _{LC})		3000		
Ratio of minimum LC verification interval Y = E _{max} / V _{min}		10000		
Combined Error	%FS	± 0.0230		
Minimum dead load	kg	0		
Safe overload	of E _{max}	150 %		
Ultimate overload	of E _{max}	300 %		
Zero balance	of FS	< ± 1.5 %		
Excitation, recommended voltage	V	5 ~ 12		
Excitation maximum	V	18		
Terminal resistance, input	Ω	430 ± 50		
Terminal resistance, output	Ω	351 ± 2		
Insulation impedance	MΩ	≥5000 (at 50VDC)		
Temperature range, compensated	°C	-10 ~ +40		
Temperature range, operating	°C	-35 ~ +65		
Element material		Alloy steel		
Ingress Protection (according to EN 60529)		IP67		
ATEX classification (optional)		II1G Ex ia II1C T4	II1D Ex iaD 20 T73°C	II3G nL II C T4

Outline Dimensions in mm



Wiring:

- Shielded, 4 conductor cable: φ5mm.
- Standard cable length: 1m.
- Cable type and cable length for customer's own application are available on request.
- Shield not connected to element.



Nr. 2009.12 H3C Rev1